

Quick Start Guide

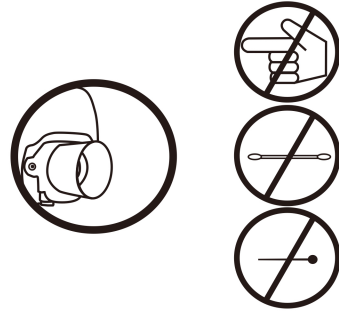
Portable Mesh Nebulizer

BrisaMist



Notice

- 1 Drug selection, dosage and use time are subject to doctor's advice.
- 2 Do not use distilled water, purified water that has been filtered several time or oily substances for nebulization.
- 3 Please be sure to keep the main unit, medication cup and accessories dry after use.
- 4 Do not touch the mesh with sharp objects, hard objects or a finger, which could affect the performance of your BrisaMist



Operating Steps



Open the medication cup cap.



Fill with liquid (do not fill above line)



Close the medication cup cap



Connect to the mouthpiece or mask



Start nebulizing

For complete instructions, user manual, downloads, returns, help, and contact information:

BrisaMist.com

The 3rd way of dosing.

Cleaning

1. Regular Cleaning



Remove the mouthpiece or mask by rotating clockwise and gently pulling to loosen it.



Open the medication cup cap and pour out any remaining liquid.



Refill with luke warm purified water up to the line (not above 105 degrees F). Do not use distilled or filtered water.



Close the medication cup cap



Run the nebulizer for about 30 seconds, then turn it off and pour out the water. Wipe down with a soft cloth. Be careful not to touch the mesh to avoid damaging it.

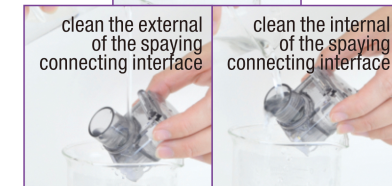
2. Deep Cleaning



Press the release button and pull out the medication cup.



2 Clean the internal of medication cup



clean the external of the spaying connecting interface

clean the internal of the spaying connecting interface

Pour a solution of 1 part luke warm water (not more than 105 degrees F) to 3 parts white vinegar over and into the medication cup and connection port to wash away any remaining medication. Then, rinse and dry using a soft cloth. Be careful not to touch the mesh to avoid damaging it. After they are dry, reassemble the components and store.

Please Note: Photos are for reference only. Color, shape and other details are subject to change and may vary between BrisaMist models.